


**CHURCH
URBAN
FUND** 

 **HODGE HILL CHURCH**
Growing Loving Community

OpenDoor
COMMUNITY FOUNDATION


worth
UNLIMITED

'Finding the Treasure'

(Exploring Asset-Based
Community Development
for churches)



Welcome! We're so glad you're here!

Singing Resistance

We are here
with our *[loving / caring / listening / courage]*,
yes our love for each other
will carry us through. (x2)





The purpose(s) of today:

- make connections
- inspire possibilities
- share useful resources
- explore the harder questions

...doing ABCD as part of the local church's engagement in the mission of God



Let's have some great conversations!

The Thinking Environment®

The quality of everything we do depends on
the quality of the thinking we do first.

The quality of our thinking depends on
the way we treat each other while we are thinking.

Nancy Kline

Attention



Listening with respect
and without interruption.



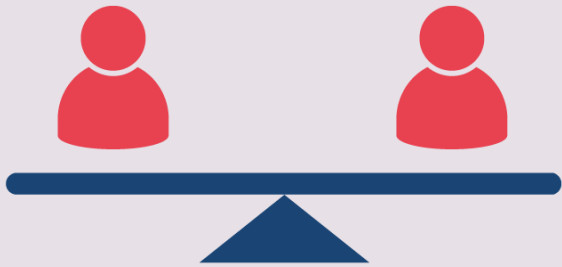
Staying interested in
where they'll go next

Listening to ignite, not
reply

Equality



Regarding one another as thinking peers



Sharing time and attention equally



Keeping agreements and boundaries

Ease



Freedom from rush and urgency

Sometimes doing means not doing

Rounds



- Question
- Direction
- Volunteer
- Uninterrupted
'I'm done'

Rounds on tables

First Round (about half a minute each)

- What's your name, and what's currently going well in your work and/or life?

Second Round (a minute or so each)

- What's a commitment you hold that's brought you here today?



**How much do you feel like
you know already
about ABCD?**



**CHURCH
URBAN
FUND** ⊕

Exploring
**ASSET BASED
COMMUNITY
DEVELOPMENT**

Contents

1. A story: a village, a crisis and a wise woman	04	5. Bumping-spaces: finding, inhabiting, nurturing, creating	13
Wisdom and direction can be found by listening to those around us. Q: What wisdom do you hear in the story?		Stepping into the places where people encounter each other. Q: Think about one place that you visit regularly. How could it become a place of encounter?	
2. The web of poverty	05	6. Uncovering the community root system: connectors, story-tellers, earth-tenders	15
It can be helpful to imagine poverty as a web of interconnected challenges that significantly impact an individual's or a community's ability to thrive. Q: Think about one or more of the three aspects of the web of poverty and reflect on how they impact at an individual or community level in your area. Find out more about the levels of poverty in your area by using the Look Up Tool.		Discovering the different characters who create connections and life in our communities. Q: Which of the characters do you most identify with? What might that mean for you as you work with others to encourage the life of your community? How could you encourage someone else to explore their gifting?	
3. Seeing differently: a tale of three missional economies	06	7. Shifting the culture – bringing others with you on the journey	17
Exploring the different ways we might see the local church's relationship with our neighbours and how this shapes our mission. i) Economy #1: Counting in ii) Economy #2: Giving out iii) Economy #3: Treasure seeking and being interrupted Q: What did you recognise as familiar in each of the three models? Are there any areas where you need to shift your focus?		The value of external encouragement and guidance, and the importance of holding space for local participation. Q: Who could you ask to come alongside your church? How can you hold space for participation?	
4. Looking for the treasure: 7 key ingredients of abundance in our neighbourhoods	10	8. Resources for telling a different story: transforming imagination	20
Identifying the resources and gifts in our local place and neighbours. Q: Where do you see each of these key ingredients in your community?		Q: What are the different stories that could be told about the place where you live?	
		Additional reading: Temptations to power (Economy #2: Giving out)	21



Exploring ABCD: Reimagining the church's mission in anxious times

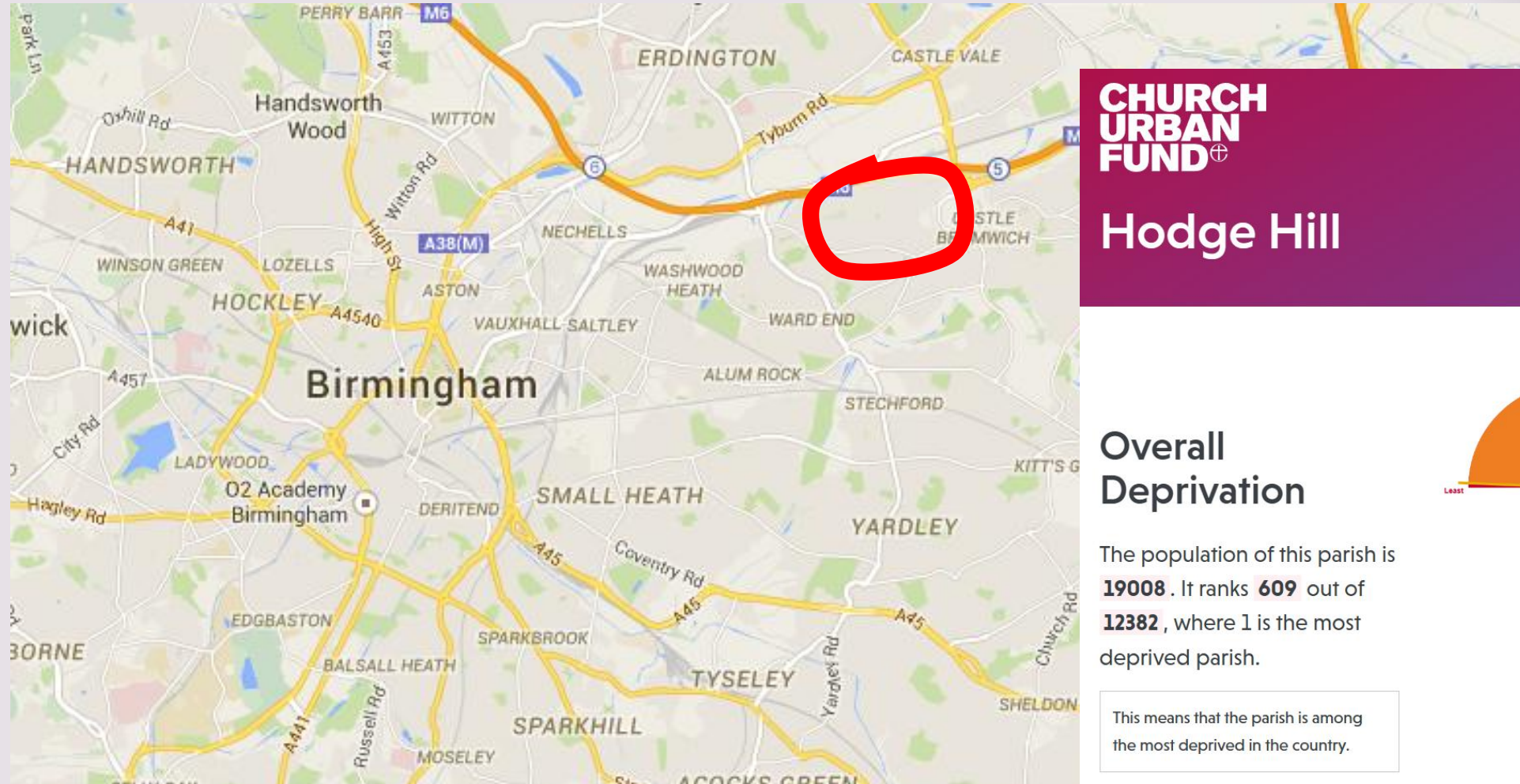
**CHURCH
URBAN
FUND** ⊕

**“What if the way we respond to the crisis
is part of the crisis?”**

(Bayo Akomolafe)



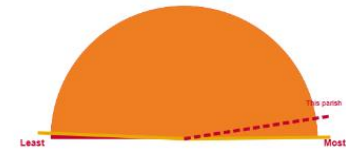
Hodge Hill parish



**CHURCH
URBAN
FUND** 

Hodge Hill

Overall Deprivation



The population of this parish is **19008**. It ranks **609** out of **12382**, where 1 is the most deprived parish.

This means that the parish is among the most deprived in the country.

THE WEB OF POVERTY

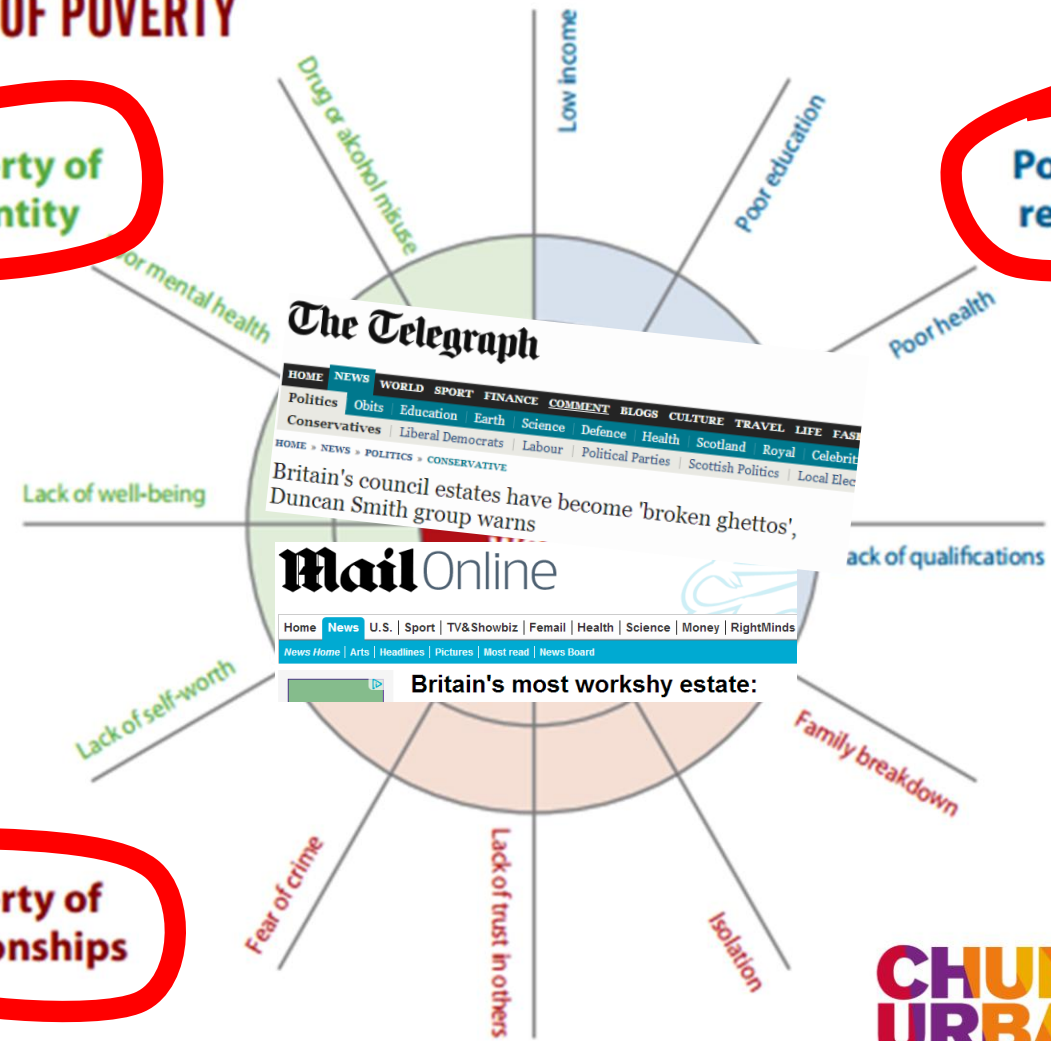
Poverty of identity

Poverty of resources

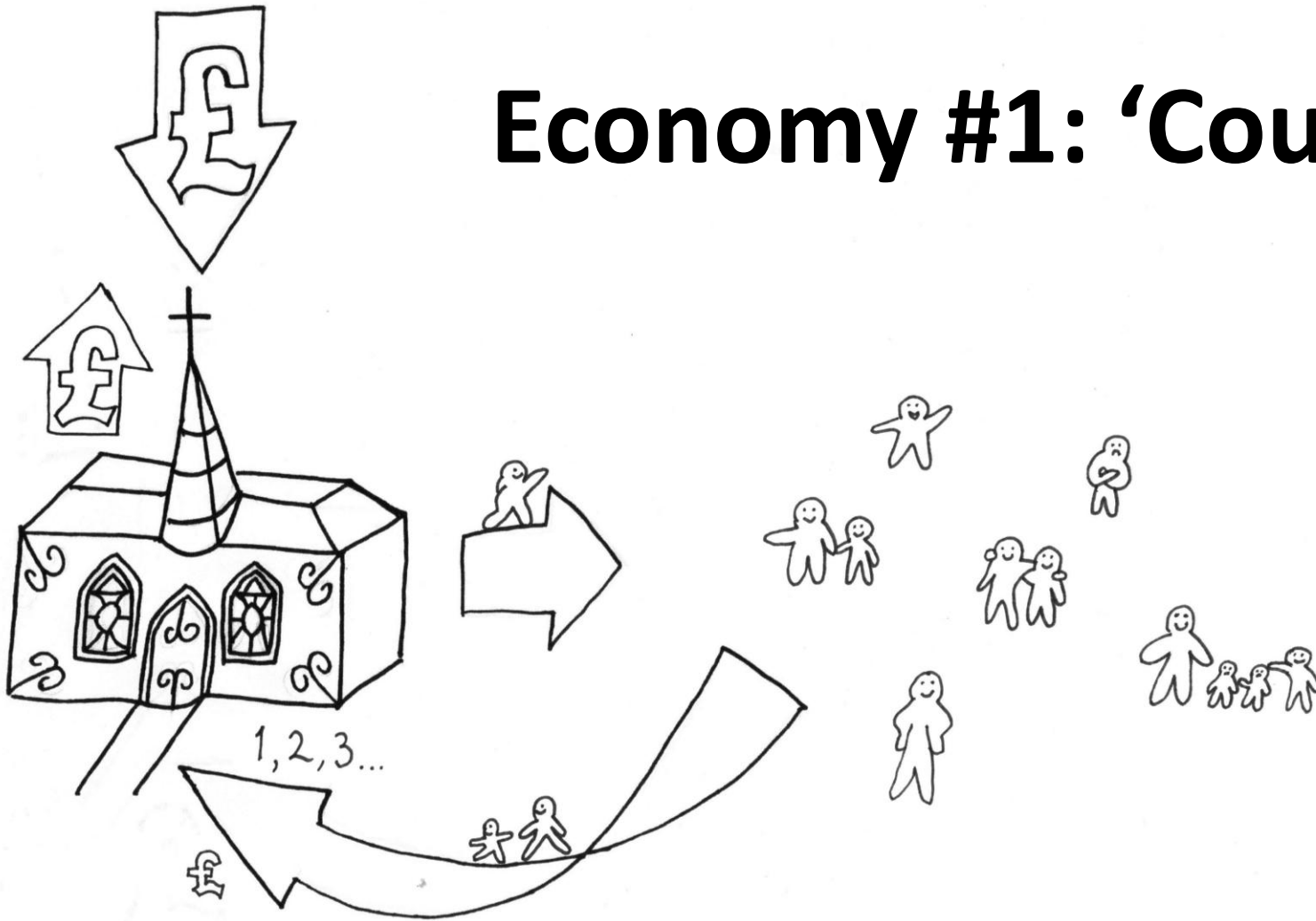
Think about one or more of the three aspects of the web of poverty.

How do they impact (at an individual level or community level) in your area?

Poverty of relationships



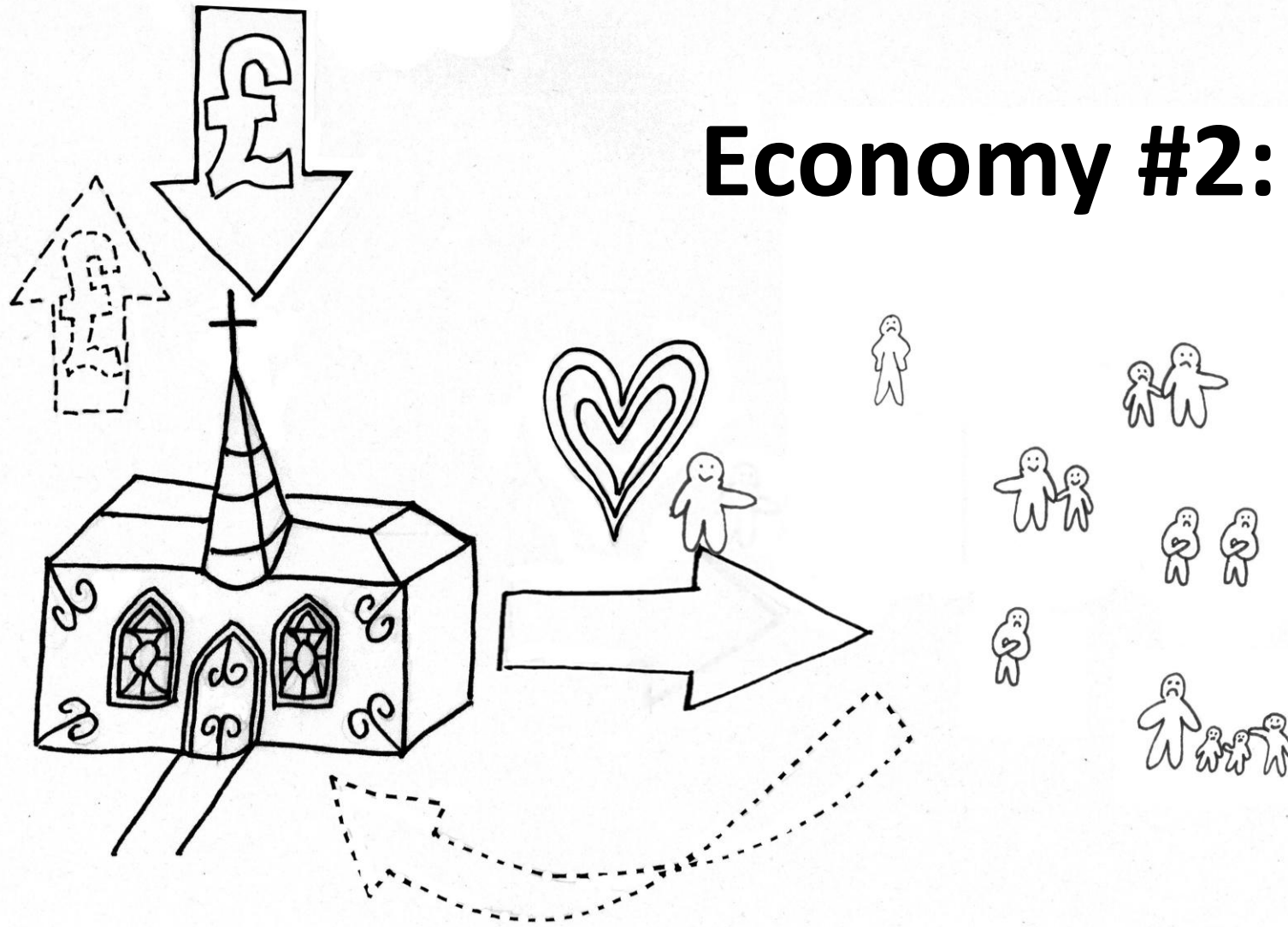
Economy #1: 'Counting in'

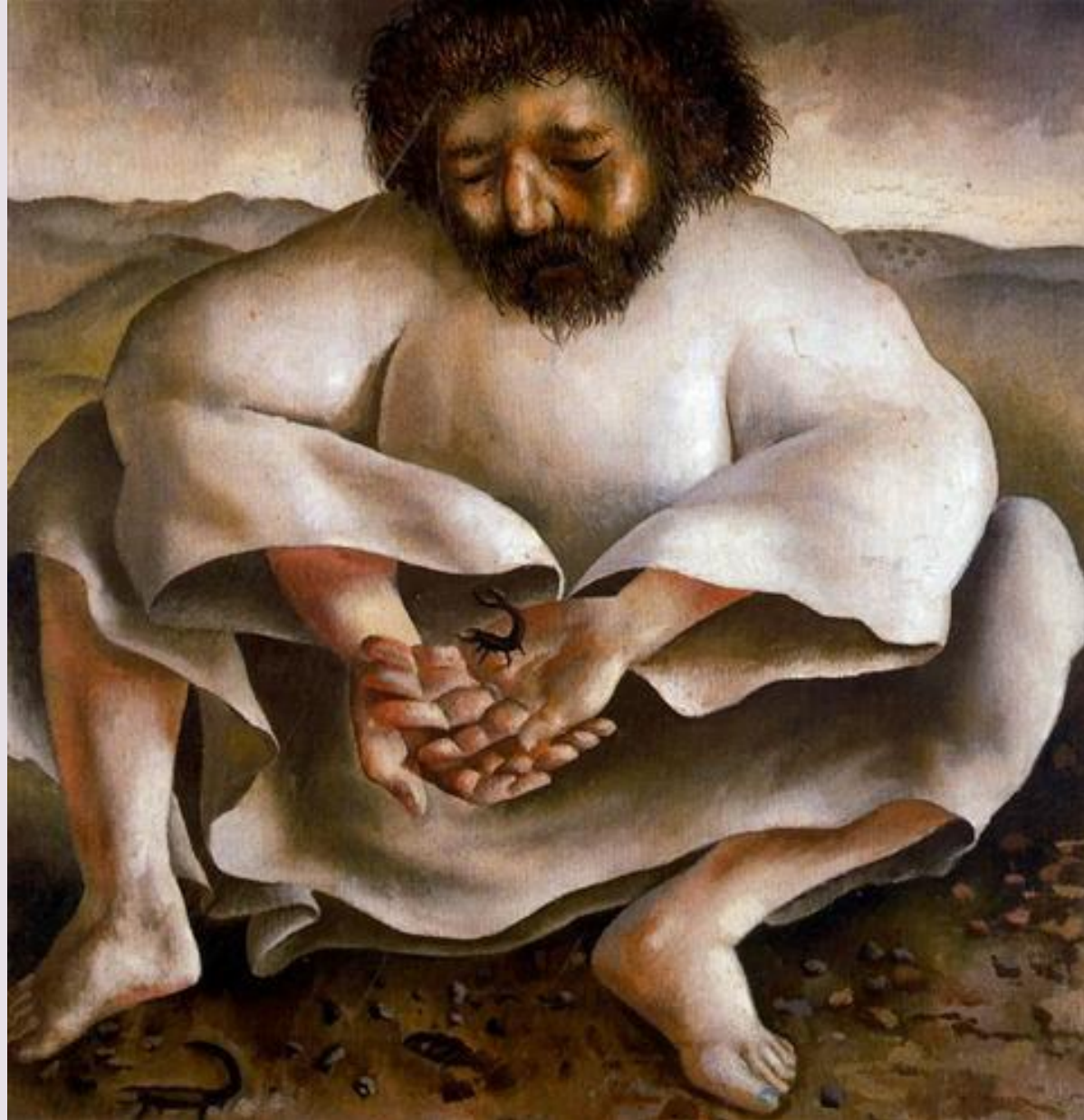


Where do you recognise this economy at work in your context?

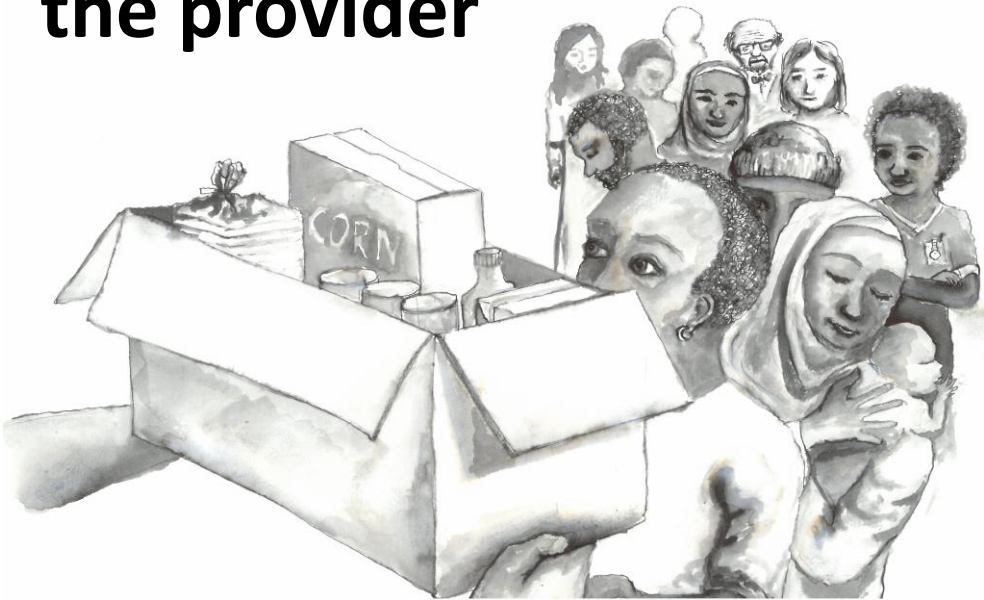
What **feelings** does it stir in you?

Economy #2: 'Giving out'





**The power of
the provider**



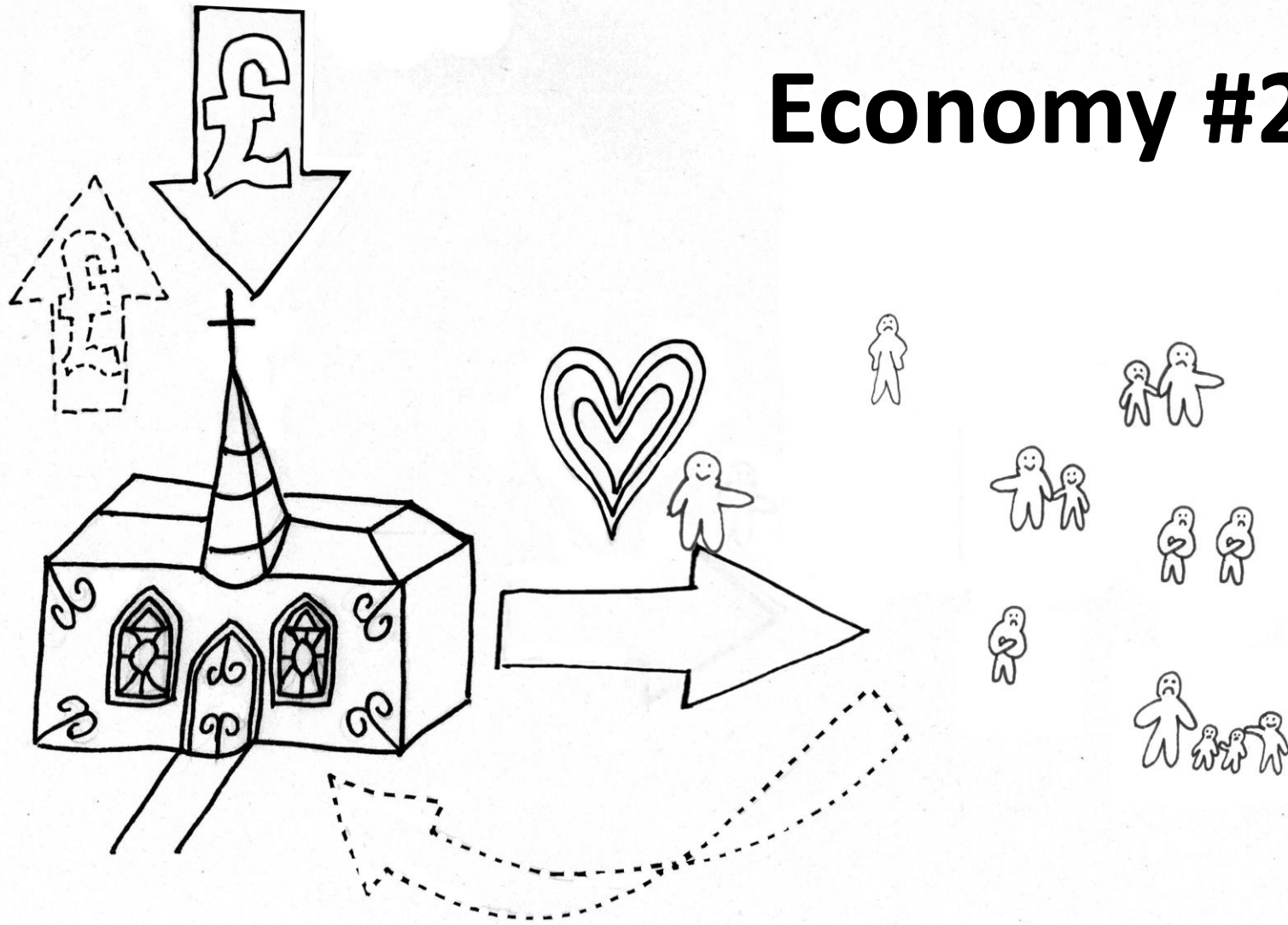
**The power of
the performer**



**The power of
the possessor**



Economy #2: 'Giving out'



Where do you recognise this economy at work in your context?

What **feelings** does it stir in you?

Economy #3: 'being interrupted' and/or 'treasure-seeking'



Asset-Based



Community Development



The regular **TRADITIONS** (new & old) of the place

The passions, knowledge, skills and gifts of local **NEIGHBOURS**



The power of local (formal & informal) **ASSOCIATIONS**



The **STORIES** of people's lives and of their evolving community

THIS PLACE

The resources of public, private and non-profit **INSTITUTIONS**



The local **ECONOMIES** of exchange (skills, time, things)

The physical and spiritual gifts of local **PLACES / SPACES**



**CHURCH
URBAN
FUND** 



'Finding the Treasure'

(Exploring Asset-Based
Community Development
for churches)

Break until 11.45am

singing together:

God welcomes all,
strangers and friends,
God's love is strong
and it never ends!



FINDING INHABITING



Bumping Spaces



Think about one 'bumping-place' in your community. How could it become (more deeply) a place of encounter?

NURTURING CREATING



Connectors



Story-tellers

Earth-tenders



Connectors

Story-tellers

Earth-tenders

Which of these do
you most identify with?

What might that mean for you
as you work with others
to encourage the life of your
community?

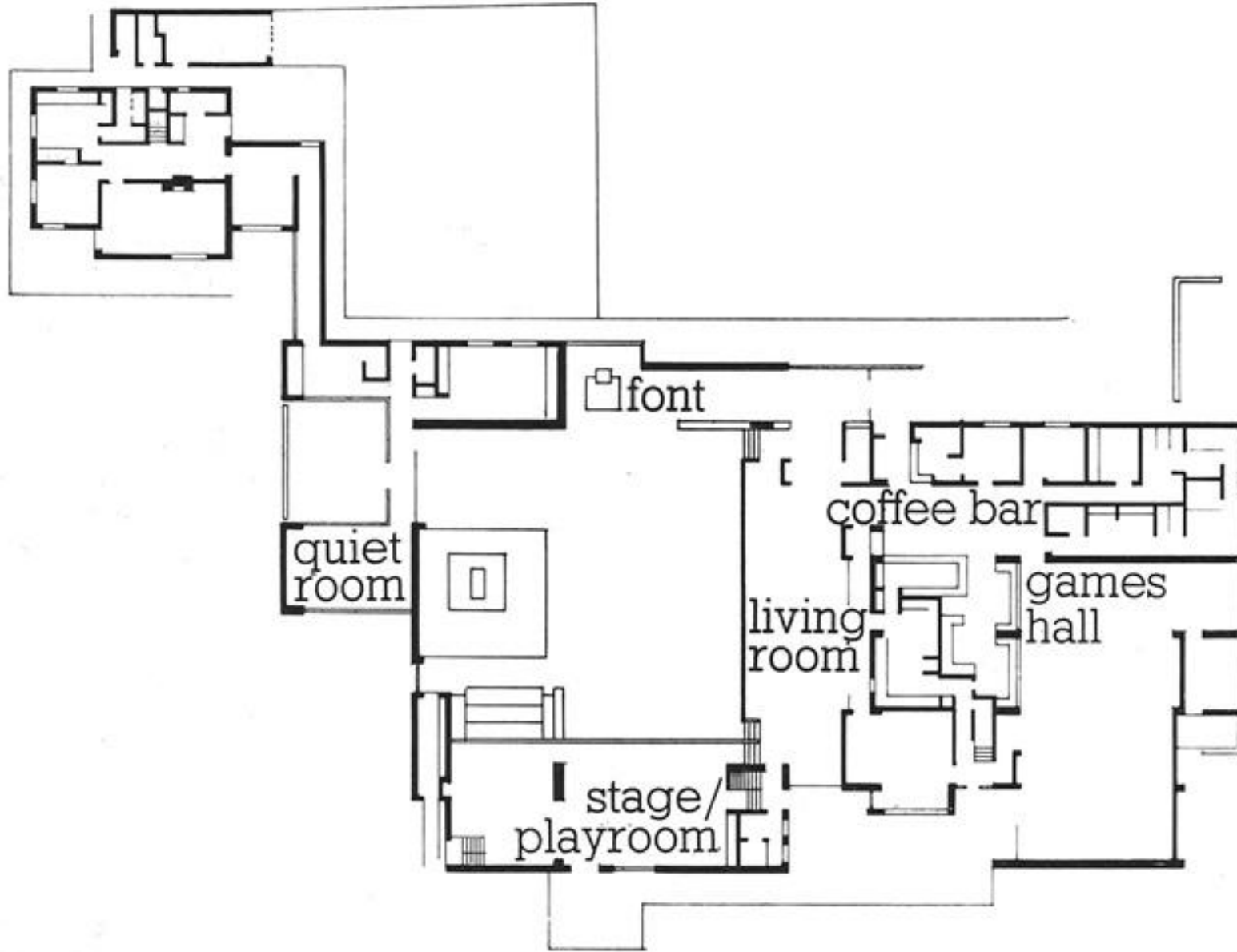
Who else in your community
brings one of these
particular gifts?

'Culture change'

1. 'precipitating moments'



St. Philip & St. James Church Centre



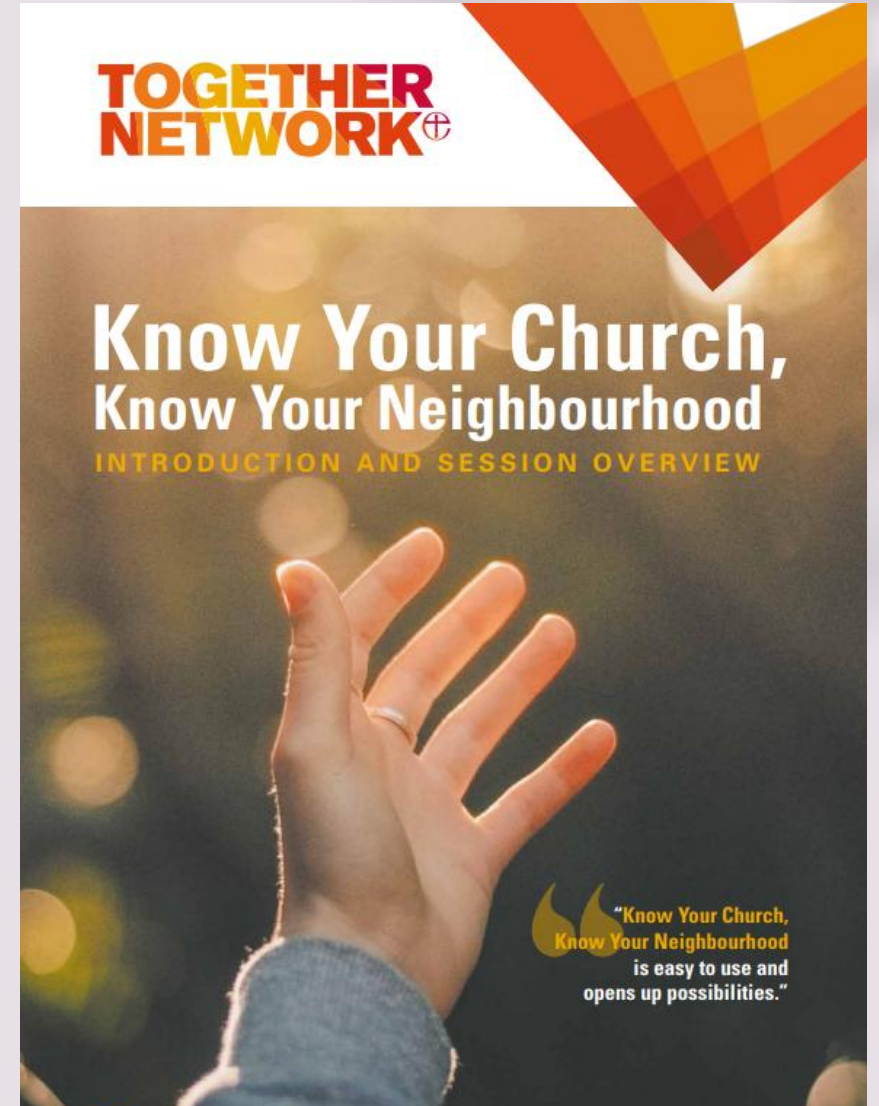




CAUTION
CARPARK BARRIER
IN OPERATION

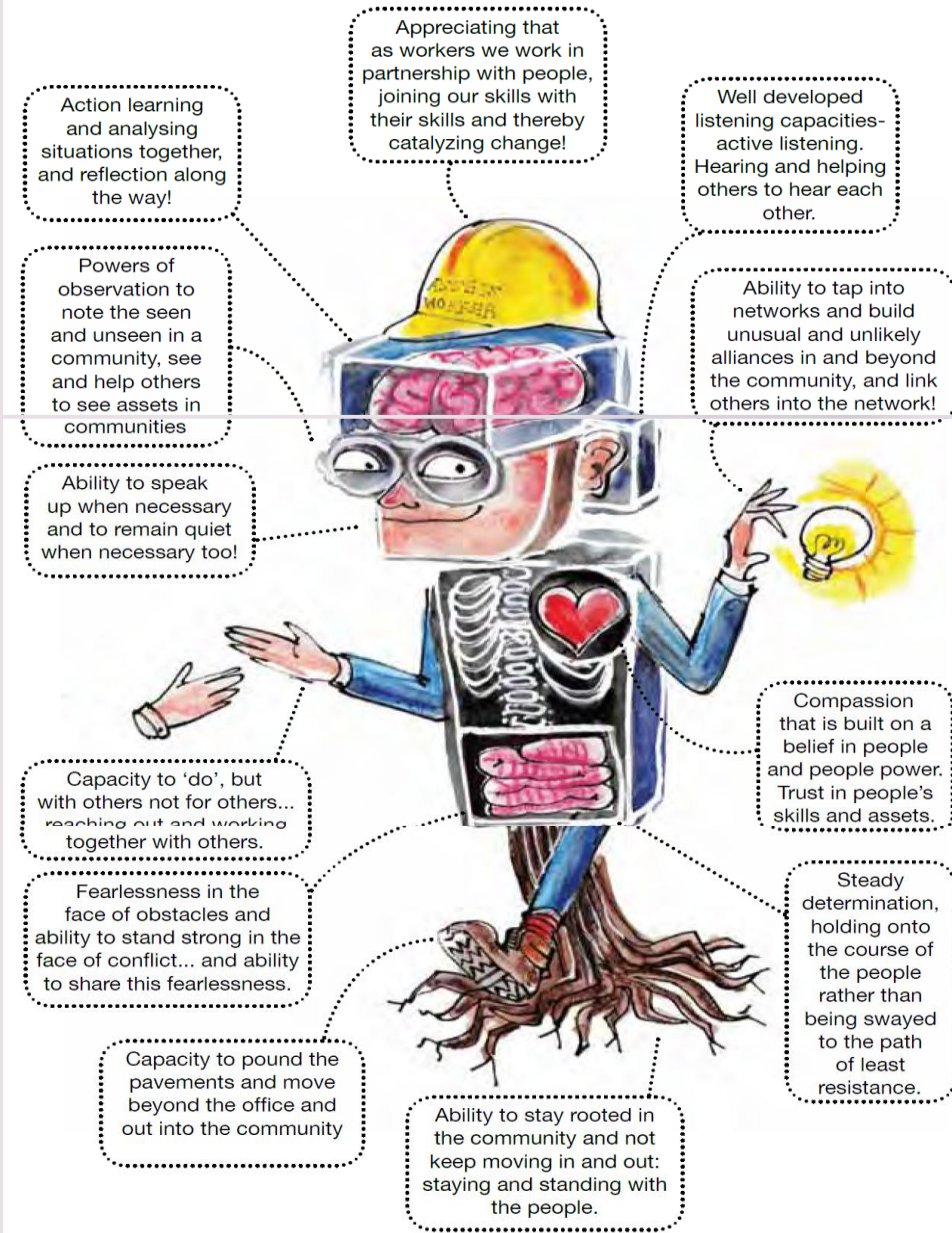
'Culture change'

1. 'precipitating moments'
2. intentional practices & processes
3. external support / mentoring / companionship



'Culture change'

1. 'precipitating moments'
2. intentional practices & processes
3. external support / mentoring / companionship
4. characteristics of local leaders / 'animators'



'Culture change'

1. 'precipitating moments'
2. intentional practices & processes
3. external support / mentoring /
companionship
4. characteristics of local leaders /
'animators'
5. resources for telling a different
story (changing the imagination)



Hodge Hill

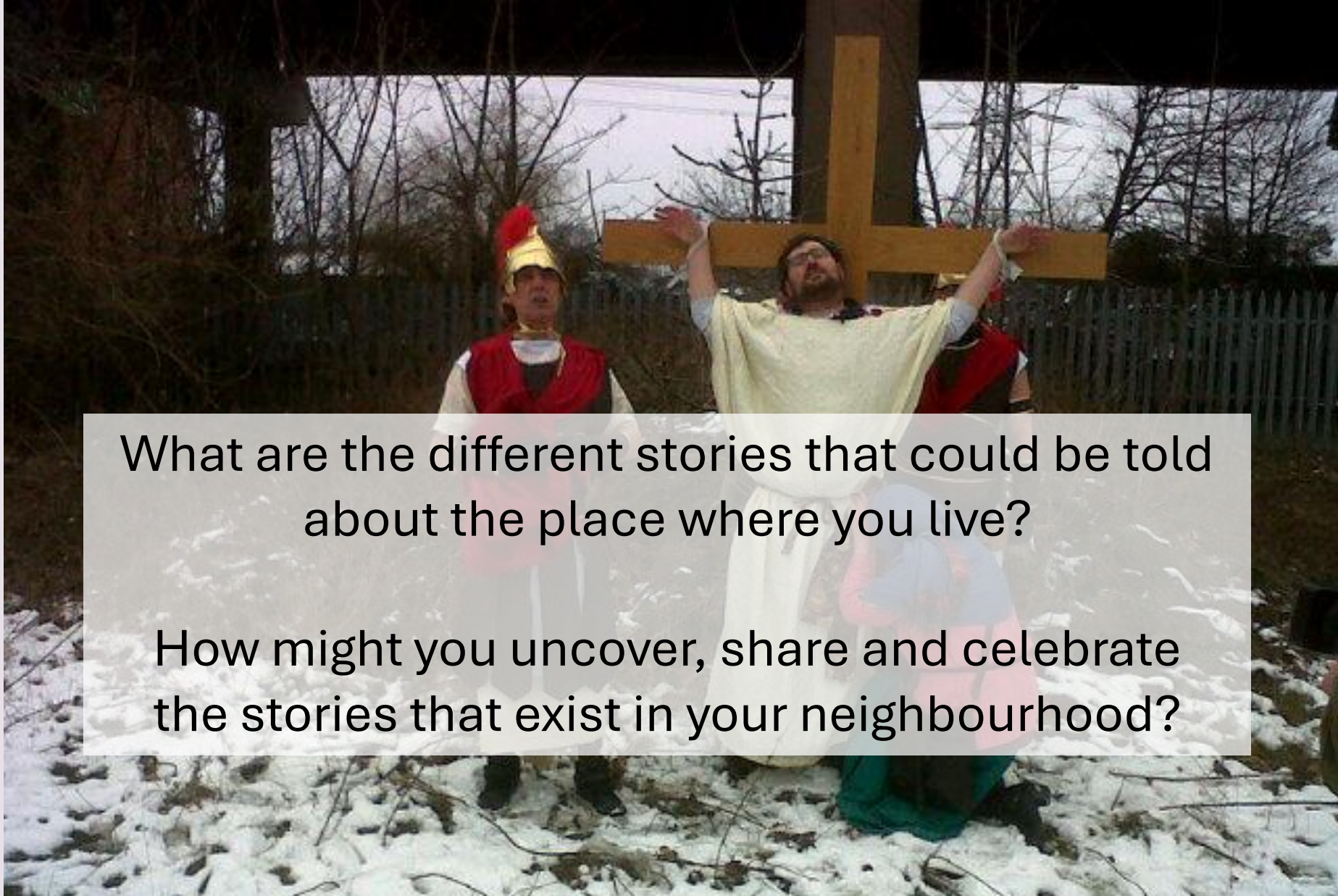
Unsung Heroes

*Celebrating Ordinary People who make a Big Difference
in Firs & Bromford, Buckland End and Hodge Hill*









What are the different stories that could be told about the place where you live?

How might you uncover, share and celebrate the stories that exist in your neighbourhood?

CUF resources and tools for local churches

- Knowledge
- Confidence
- Connection
- Motivation



Living Faith in the City, October 2025

Shine & Grow

Tools and resources for your journey from insight to impact, where shining a light and growing good go hand in hand to transform communities for lasting change.

REAL
ISSUES

Shine
AND
GROW

REAL
TOOLS

Knowledge Bank

cuf.org.uk/knowledge-bank



Shine a new light on
your parish with the
Look Up Tool

Look Up Tool

cuf.org.uk/lookup-tool

Growing Good

- 7 free sessions for small groups
- For all churches
- Research based
- Tried and tested



BROUGHT TO YOU BY CUF®

Grow
IN
HOSPITALITY &
RELATIONSHIPS

Coming up in 2026

Growing Good: Youth

- 6 free sessions for 14-18 year olds
- Grow in faith, discipleship and action



Other tools and resources

cuf.org.uk/knowledge-bank



Project Planning & Fundraising Guide

PROJECT PLANNING | FUNDRAISING RESOURCES

This guide is designed to help churches and small community groups plan, fund, and evaluate impactful projects. Whether you are launching a new initiative or...



Volunteering Resources

TOOLS | PROJECT PLANNING | COMMUNITY SUPPORT

A comprehensive guide to working well with volunteers including editable templates for risk assessment, expectations, problem solving, expenses and more.



Exploring Asset Based Community Development

TOOLS | PROJECT PLANNING | COMMUNITY SUPPORT

For groups or individuals who want to explore Asset Based Community Development (ABCD) and think about how they can practice some of the principles of ABCD in...



Head Heart Hands

TOOLS | PROJECT PLANNING

An activity to help you identify your own gifts and skills and those of the people around you. Suitable for all ages and can be used with small groups or as...



Tools for Growing Participation

TOOLS | COMMUNITY SUPPORT

These practical tools from CUF and The Centre for Theology and Community help churches to enable journeys of deepening participation and discipleship, and to...



Seasonal worship resources

PRAYER GUIDES | WORSHIP RESOURCES

Resources for churches and individuals we journey through the liturgical year together, reflecting on how we can put faith into action in every season.



Prayer Diary

PRAYER GUIDES

Our prayer diary is a thoughtful resource designed to guide your prayers. You'll find reflections, scripture readings and prayer prompts to help you pray for...



Prayer Walk Guide

TOOLS | PRAYER GUIDES

Our prayer walk guide offers tips and advice for organising a prayer walk, including suggestions for praying for the different organisations, institutions and...



Look Up Tool

TOOLS | PROJECT PLANNING

Get a clear picture of poverty in your community and how it compares across England. And use our guide to help you plan how to respond, including case studies...

Places of Welcome

“It’s a regular safe place to come for a chat and friendship. People don’t feel that they are judged or looked down on.

They value that they are treated with respect and listened to.”

Revd Tom Worsley, Christ Church Felling, Gateshead



cuf.org.uk/places-of-welcome

**CHURCH
URBAN
FUND** 



'Finding the Treasure'

(Exploring Asset-Based
Community Development
for churches)

Workshops start at 1.30pm

**CHURCH
URBAN
FUND** 



'Finding the Treasure'

(Exploring Asset-Based
Community Development
for churches)

Workshops start at 2.30pm

**CHURCH
URBAN
FUND** 



'Finding the Treasure'

(Exploring Asset-Based
Community Development
for churches)

Gathering together at 3.30pm

Gathering up...

- **ACTIONS**: what now matters enough for me to do something about? [make a copy for yourself?]
- What **REQUESTS** do I have (to someone else in the room)? [with your name!]
- What **OFFERS** can I make today (to someone else in the room)? [with your name!]



**What has made today
time well spent for you?**

(please write something on your tablecloth!)

**CHURCH
URBAN
FUND** 

**HODGE HILL CHURCH**
Growing Loving Community

OpenDoor
COMMUNITY FOUNDATION

**worth**
UNLIMITED

'Finding the Treasure'

(Exploring Asset-Based
Community Development
for churches)



Thank you for coming! See you again!