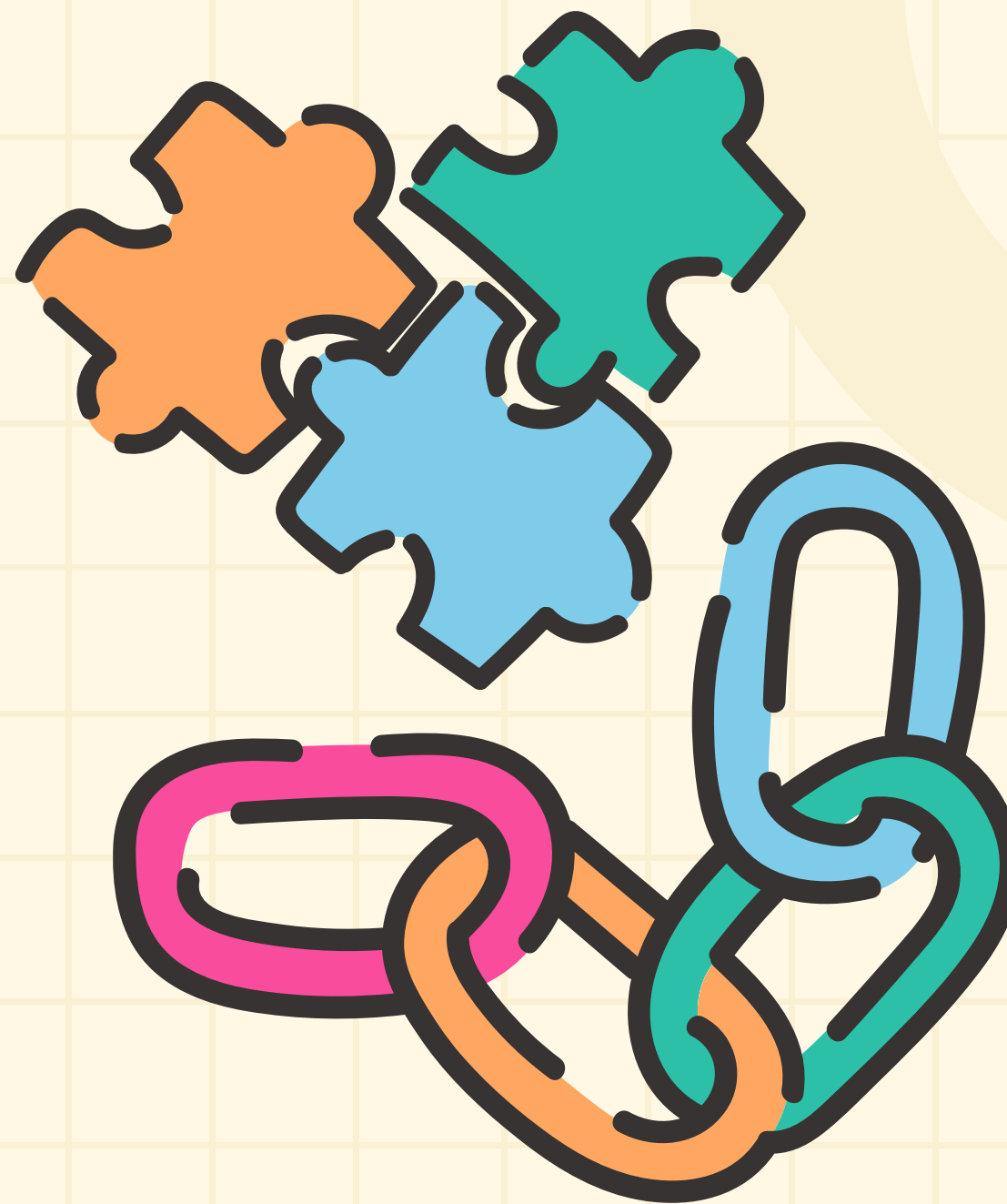


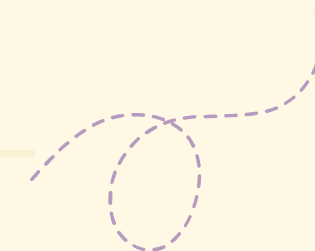
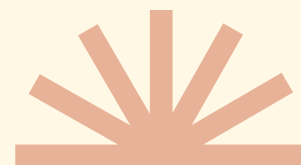
worth  
UNLIMITED



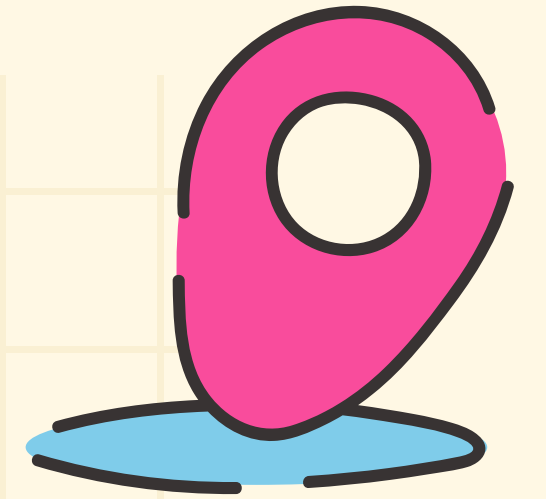
# Community Building

# With Young People

Dan - Worth Unlimited



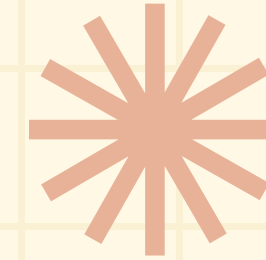
# Introduction



**Moving from programmes for young people to communities shaped with/by young people.**

- Seeing young people as contributors not consumers
- Building with rather than for
- Creating intergenerational spaces where gifts, leadership and belonging can grow

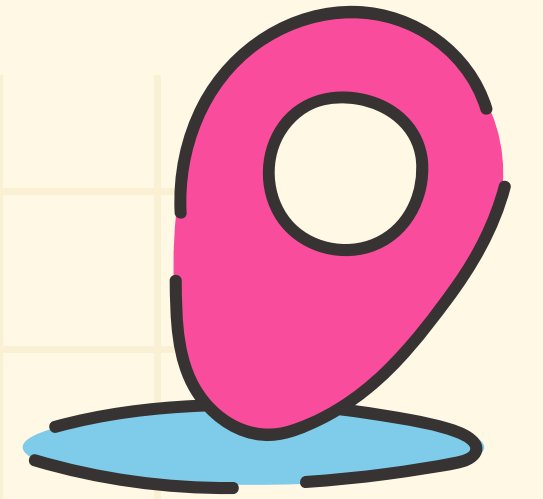




- Married to Steph, we have 2 girls Mia & Poppy
- I did Church youth work/ministry for 3 years before moving to Worth Unlimited to run community based youth work over 16 years.
- 8 years developing and pioneering asset-based youth work in Birmingham
- learning has often come through mistakes, listening, relationships and from the community itself.

## When I started...

- Inherited models of youth work/ministry
- Pressure/assumption to run targeted programmes & projects
- Pressure to “engage” young people – hard to reach young people, disadvantaged, at risk
- Adults & institutions setting agendas, programmes and solutions
- Success measured by attendance and improved ASB

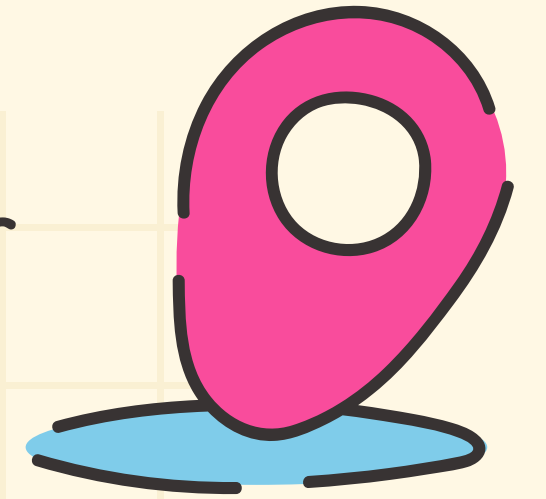


# Group discussion

IMAGINE YOU ARE WRITING A FUNDING BID FOR A NEW PROJECT - THE BID WANTS YOU TO IDENTIFY THE **"NEEDS"** OF THE COMMUNITY AND THE YOUNG PEOPLE.

- What words might you use?
- What evidence/stats might you include?
- How might you describe the community or what the young people are like?

“how would young people feel if they read one of our funding bids?”



Workshy, lack confidence and skills, low attainment, lacking aspiration, causing asb, no direction, criminal activity, county lines, youth violence, low self esteem...


We started to ask a different question of our young people and our community...

“What is **STRONG** not what is wrong?”

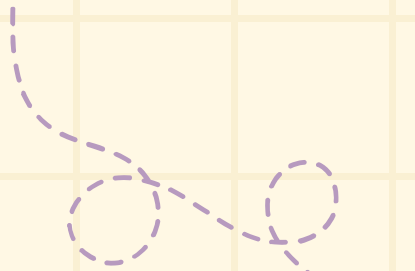
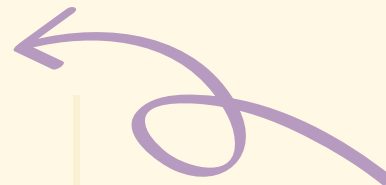
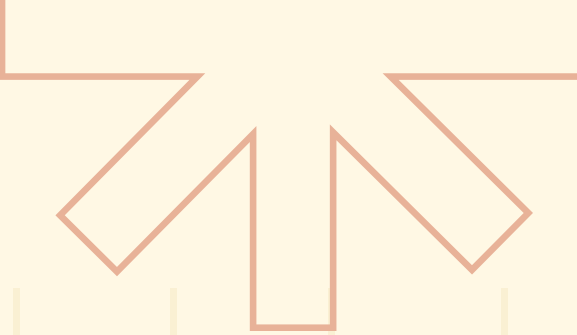




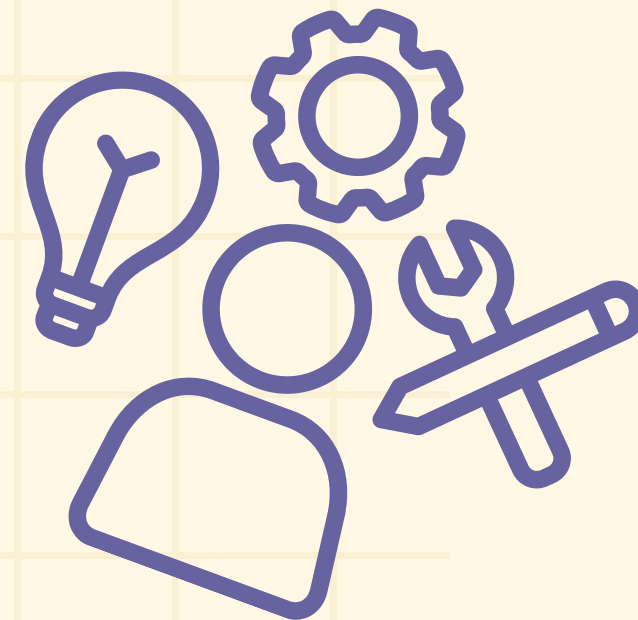

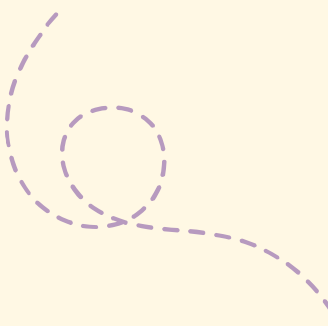
We became the  
“Alongsider” not just the  
Youth worker



**We were not the only asset in  
the community**



**‘Who already exists in this community  
that could journey alongside young  
people?’**



# “Finding the local treasure”

Young people gifts

elders wisdom

practical skills

hospitality

creativity

We are sitting on a treasure chest

It's the people in our communities!

Our communities are more valuable than gold!



passions

lived experience

networks

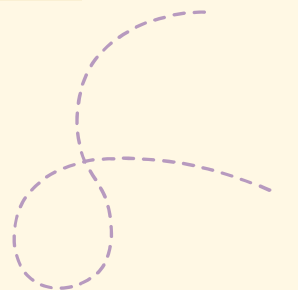
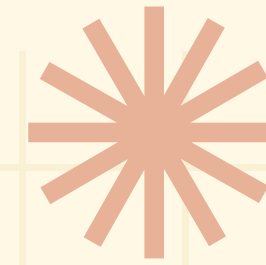
spaces

What gifts/treasure is sat dormant in your community because no one has connected them yet?

# What changed for young people – Barbara



- **young people shaping projects**
- **community mapping**
- **intergenerational activities**
- **young people serving and contributing**
- **neighbourhood ownership**
- **adults becoming facilitators rather than controllers**



# 4 principles

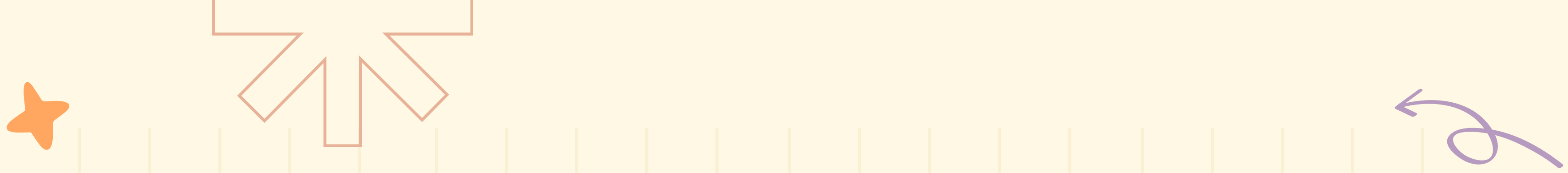
**1. Gifts not Gaps**

**3. Contribution creates transformation**




**2. Belonging before participation**

**4. Intergenerational community matters**



The question is not whether they have gifts to bring. The question is whether our communities are organised in ways that allow those gifts to emerge.”





worth  
UNLIMITED



# Thank You

Do you have any questions?

